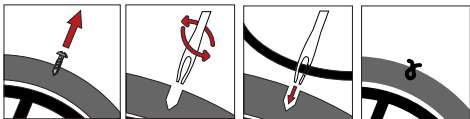


# INSTRUCTIONS



- 1** Locate source of puncture.
- 2** Remove debris or puncture source.
- 3** Select size and type of tyre plug dependent on tyre type -either black tyre plug for MTB tyres or bacon tyre plug for road tyres.
- 4** Insert tyre insertion tool into hole, turn in hole and remove.
- 5** Place tyre plug into eyelet of tyre insertion tool. The eyelet should be in the middle of the tyre plug.
- 6** Push tyre plug into hole, ensuring the ends of the tyre plug remain on the outside of the tyre.
- 7** With the tool and plug still in the tyre, turn the tool clockwise a few times to twist the tyre plug inside the tyre.
- 8** Remove the tool and ensure the tyre plug remains in the tyre.
- 9** Re-inflate the tyre to your desired pressure using a bike pump or CO2 inflator.

# REGISTER YOUR WARRANTY

Your purchase comes with a lifetime warranty against manufacturer defects. To register and activate your warranty please visit:

[probiketool.com/warranty](http://probiketool.com/warranty)

## Not totally satisfied or need help?

We are committed to customer satisfaction, so if you are not happy with your purchase, please contact us at [support@probiketool.com](mailto:support@probiketool.com) so that we can make it right. We pride ourselves in responding within 24 hours.

## VIP Club

Join our VIP Club to receive coupon deals and information on our new products: [probiketool.com/vip](http://probiketool.com/vip)

## FOLLOW US!

To keep up to date with all the latest products, news and awesome deals from PRO BIKE TOOL, sign up for our newsletter at [probiketool.com](http://probiketool.com), or follow us at:



[@probiketool](https://www.facebook.com/probiketool)



[@probiketool](https://www.instagram.com/probiketool)